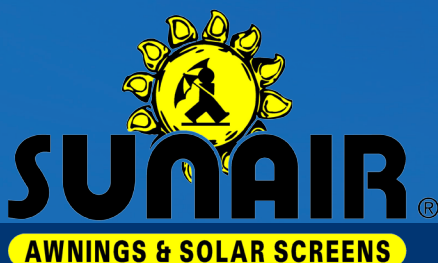


MASTERSHADE® EXTERIOR SCREENS

The Ideal Filter for Natural Light



www.SunairAwnings.com

Here is why the Mastershade® is the best screen on the market

FEATURES:

CASSETTE

The cassette is a compact 4" x 4" design made of powder coated extruded aluminum. The cassette has an easily removable front cover. A larger 5" x 5" model is available for wider widths.

HEM BAR

The hem bar of the Mastershade® is heavy duty with a recessed cavity for attaching the fabric and smooth rounded edges in the channel.

TRACK

Two types of standard track are available for the Mastershade® including the "Flange" tracks. In addition, you can substitute tracks for cables or eliminate the track or cables all together.

BENEFITS:

The compact cassette design makes it easy to adapt the Mastershade® to most buildings. The aluminum extruded design is stronger than some of the competitors sheet metal box design. A removable front cover makes for easy installation and adjusting.

The recessed fabric cavity hides the fabric pocket so the pocket seam is less visible from inside the window. The smooth edges help eliminate sharp corners and fabric damage due to wind.

The flange track overlaps the fabric edge, eliminating the light gap in the window that will otherwise be seen between the fabric edge and the track. The optional cables are used when the standard tracks can not be bolted to the wall.

OPTIONAL: Our exterior screens are available with an optional zipper type track that turns your screen into a rolling bug screen. Great for keeping bugs at bay for verandas, garage doors, and Lanai's. These screens can also be used with vinyl fabric and clear windows for keeping moderate weather at bay. Please see separate brochure for these products.

The Mastershade® MODELS:

SC2000

SC2500

SC3000

SC2000 Max width 14 ft / 24 ft.
Max drop 14 ft. 4" compact cassette design

SC2500 Max width 20 ft / 24 ft.
Max drop 16 ft. Open roller design with optional hood

SC3000 Max width 20 ft / 24 ft.
Max drop 14 ft. 5" cassette design

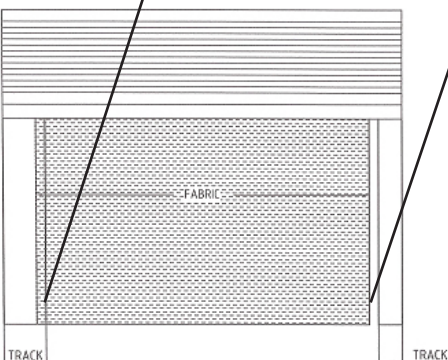
Note: Max drop depends on width and fabric type.

Wider widths are available with fabric splits

Flange track eliminating fabric gap

Standard track with fabric gap

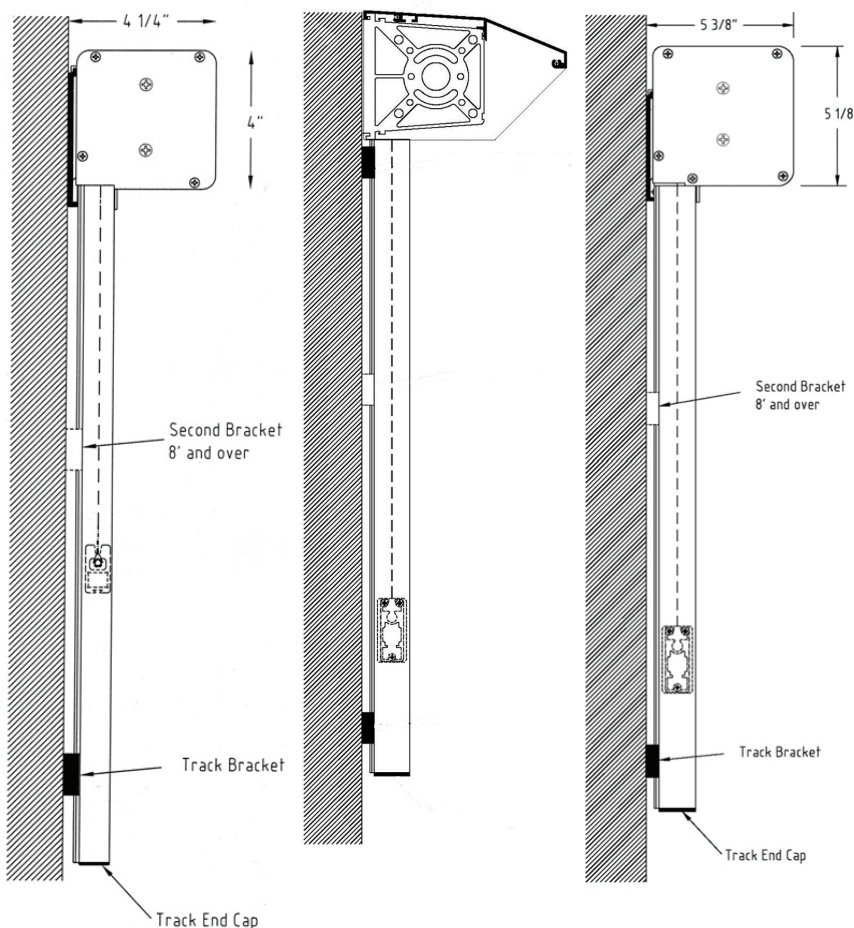
Hem bar with recessed fabric cavity hiding the seam



Standard Track



Flange Track (SC2000 only)



COMBINE FUNCTION AND QUALITY with energy savings...

The Mastershade® screen system with the fabric lowered, blocks glare and controls sun light while allowing an unobstructed view through the glass.



The **MASTERSHADE®** screen system by Sunair® is the perfect solution for maintaining shade and comfort in your home or office. The Mastershade® dramatically decreases heat and glare caused by the sun and is the ideal solution for solar protection, shading or total black out by controlling or blocking the sunlight that penetrates your windows and doors. Our shades also protect your furniture, curtains and floor coverings. Imagine sitting at your computer or watching TV without being disturbed by too much sunlight and still having a view of the outside.



The **MASTERSHADE®** screen system gives you complete control of your environment while not disturbing the view through your window. Sunair® offers only the highest quality mesh fabrics known for their exceptional transparency and sun blocking capabilities. Ask your Sunair® dealer which mesh fabric is best for you.



**SUNPROOFING
AMERICA!™**



SUNAIR® offers only the best mesh and acrylic fabric for your screen. More often a mesh fabric is needed because you desire solar protection while still maintaining a view out of the window when the shade is lowered. Sunair® offers mesh from both Mermet and Soltis by Ferrari. Both Mermet and Ferrari are mesh fabrics that offer both exceptional transparency and sun blocking capabilities.

Ask your SUNAIR® dealer which mesh or acrylic fabric is best for your application.

The Mastershade® will significantly reduce the indoor temperature while lowering cooling costs by blocking the sun before it enters your home. Our fabrics effectively block up to 90% of solar heat rays when installed on the exterior of the window. Depending on the type of fabric used and size of the window, you may realize reduction in air-conditioning costs.

MOTORS

By motorizing your Mastershade® you can extend and retract your shade effortlessly. In fact, motorizing your shades will increase your usage of the product and overall satisfaction. The motors also do not require any maintenance. With a flick of a switch or remote the shade will raise or lower automatically. A standard wall switch or RTS remote control is available with the optional SOMFY Plug-In motors, eliminating the need for an electrician.



Standard Switch



Remote Control

SOMFY RTS MOTORS feature an integrated radio receiver that allows you to operate the screen by remote. With the optional SUNIS sun sensor and EOLIS wire free motion/wind sensor the awning automatically extends and retracts with the sun's intensity and exposure to excessive wind.



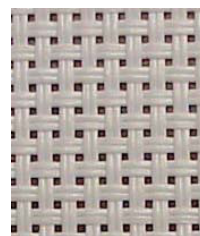
Sunis Sun Sensor



Solid Acrylic Fabric



Striped Acrylic Fabric



14% Open Mesh



6% Open Mesh

FRAME COLORS



Ivory



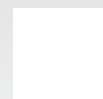
Mocha



Brown



Bronze



White



Black



Gray



Taupe



Green

CUSTOM COLORS ARE AVAILABLE



**SUNPROOFING
AMERICA!™**



AUTHORIZED DEALER:

www.SunairAwnings.com

Sunair® reserves the right to change engineering without notice ©2012 Sunair® Awnings & Screens.

Sunair® Awnings, 7785 Rt. 175 Jessup, MD 20794
©2012 Awnings Unlimited Inc.
Jessup, MD 410.799.1145 Phoenix, AZ